

LCRA Creekside Conservation Program San Saba County



Hydraulic tree shearing has become a popular method for selective brush removal.



2007 LCRA Creekside Conservation Gate Sign Presentation. Left to right: San Saba SWCD Board Chairman, C.K. Stevenson; Rancher, Joe Simpson; LCRA Board Director, Clay Nettleship; Rancher, Michael Simpson; and NRCS District Conservationist, Mike Shomette.

San Saba SWCD: LCRA Creekside Conservation Program Participation

Year	1999	2000	2001	2002	2003	2004	2005*	2006*	2007*	Total
Number of Participants	0	2	6	2	1	1	0	1	2	33
Dollars Reimbursed to Landowners	\$0.00	\$12,721.22	\$13,781.43	\$0.00	\$0.00	\$1,463.66	\$0.00	\$5,361.81	\$8,949.60	\$168,093.41
Management Acres	0	91	521	103	140	48	0	155	194	11,884
Brush Acres	0	21	140	21	0	0	0	0	42	228
Range Reseeding Acres	0	0	128	0	40	0	0	0	0	251
Pasture Planting	0	77	164	78	20	48	0	42	159	761
Critical Area Planting/Shaping Acres	0	0	0	0	0	0	0	0	0	0
Cross Fencing Feet	0	0	12400	1550	1930	0	0	0	1000	29736
Ponds	0	0	1	1	0	0	0	0	2	5
Pipeline	0	0	0	0	0	0	0	0	0	1500
Terrace Levelling Ft.	0	0	0	0	0	0	0	0	0	0
Grade Stabilization Structures	0	0	0	0	0	0	0	0	0	0

* A Federal 319 (h) grant provided partial funding for projects during these years.

LCRA Creekside Conservation Program

LCRA was created in 1934 as a Texas conservation and reclamation district. Now decades later, LCRA remains dedicated to land stewardship through the Creekside Conservation Program. This program began in 1990 to help landowners retain soil and enhance land productivity. It benefits the entire river basin by reducing sedimentation of streams, lakes and water supply reservoirs and lessening degradation of water quality and aquatic habitat.



Natural Resources Conservation Service

The USDA Natural Resources Conservation Service (NRCS) is the federal agency that works hand-in-hand with the American people to conserve natural resources on private lands. NRCS is a valuable land stewardship partner in San Saba County, providing the technical service necessary to implement soil and water conservation plans. NRCS brings 60 years of scientific and technical expertise to the Partnership.



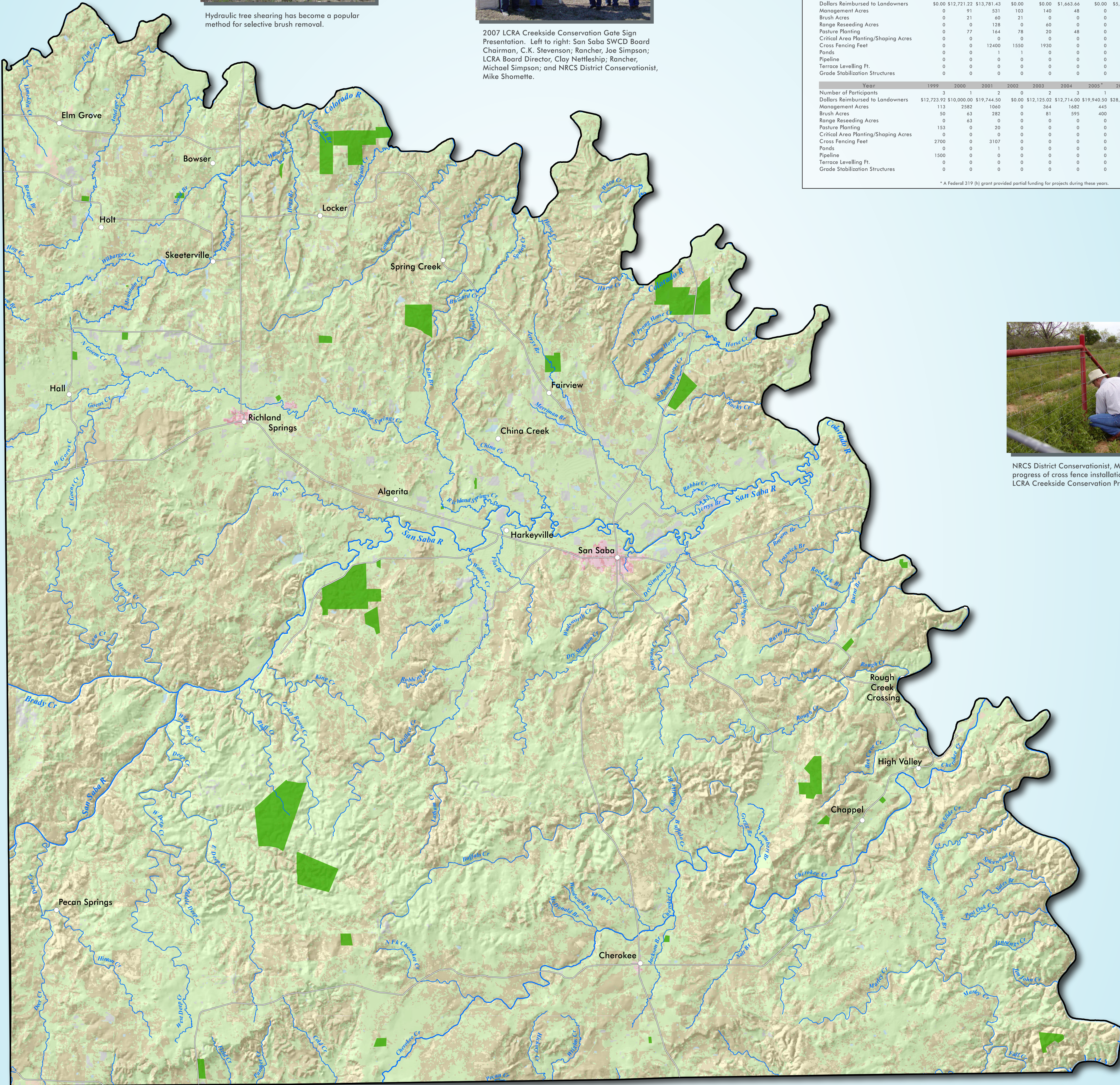
San Saba Soil and Water Conservation District

In the 1930's our country experienced some of the worst dust storms recorded in history. Protection of topsoil became a priority and as a result, soil and water conservation districts (SWCDs) were formed so landowners could work together at the local level to solve this major problem. The San Saba Soil and Water Conservation District is the cornerstone of land stewardship in San Saba County.



Federal 319 (h) Grant Augments the Creekside Conservation Program

In 2004, the LCRA Creekside Conservation Program was awarded a three-year, \$307,000 grant from the Texas State Soil and Water Conservation Board and the U.S. Environmental Protection Agency. In 2007, the TSSWCB approved another three-year grant totaling \$458,000. This funding enables more landowners to implement conservation practices on their land.



NRCS District Conservationist, Mike Shomette checks progress of cross fence installation through LCRA Creekside Conservation Program.



San Saba SWCD Board Directors, Pat Poole and Jim Spivey, and District Secretary, Chris Pappas at the 2007 San Saba Agriculture Safety Day.



LCRA and the San Saba SWCD work with landowners to conserve soil and water.

 Creekside Conservation Program Properties

